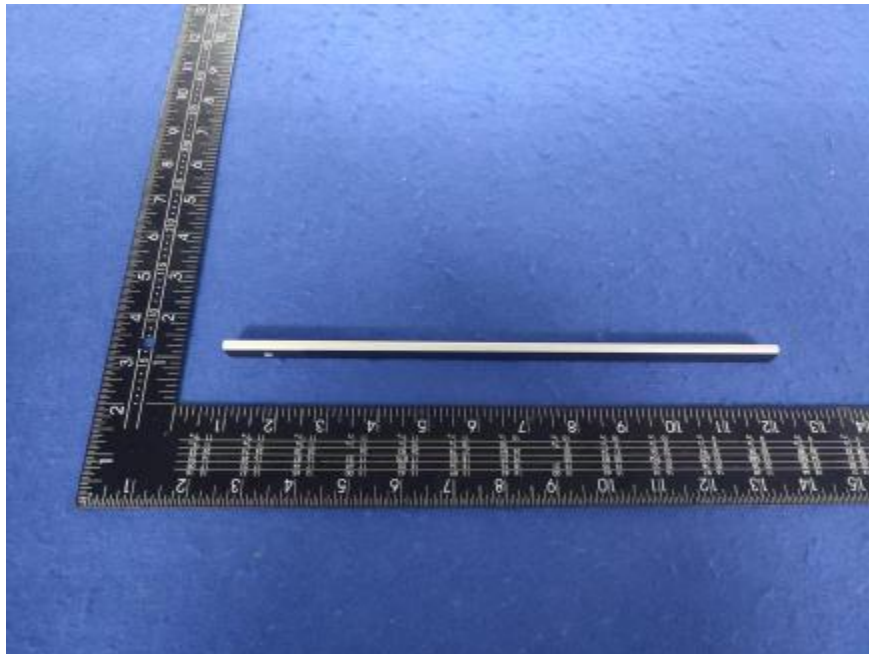


Luminaire Photograph



Light Output Ratio:	38.4%	
Luminaire Power:	4.982 W	
SHR Nominal:	1.25	Calculated using the TM5
SHR Maximum:	1.35	fine grid method.

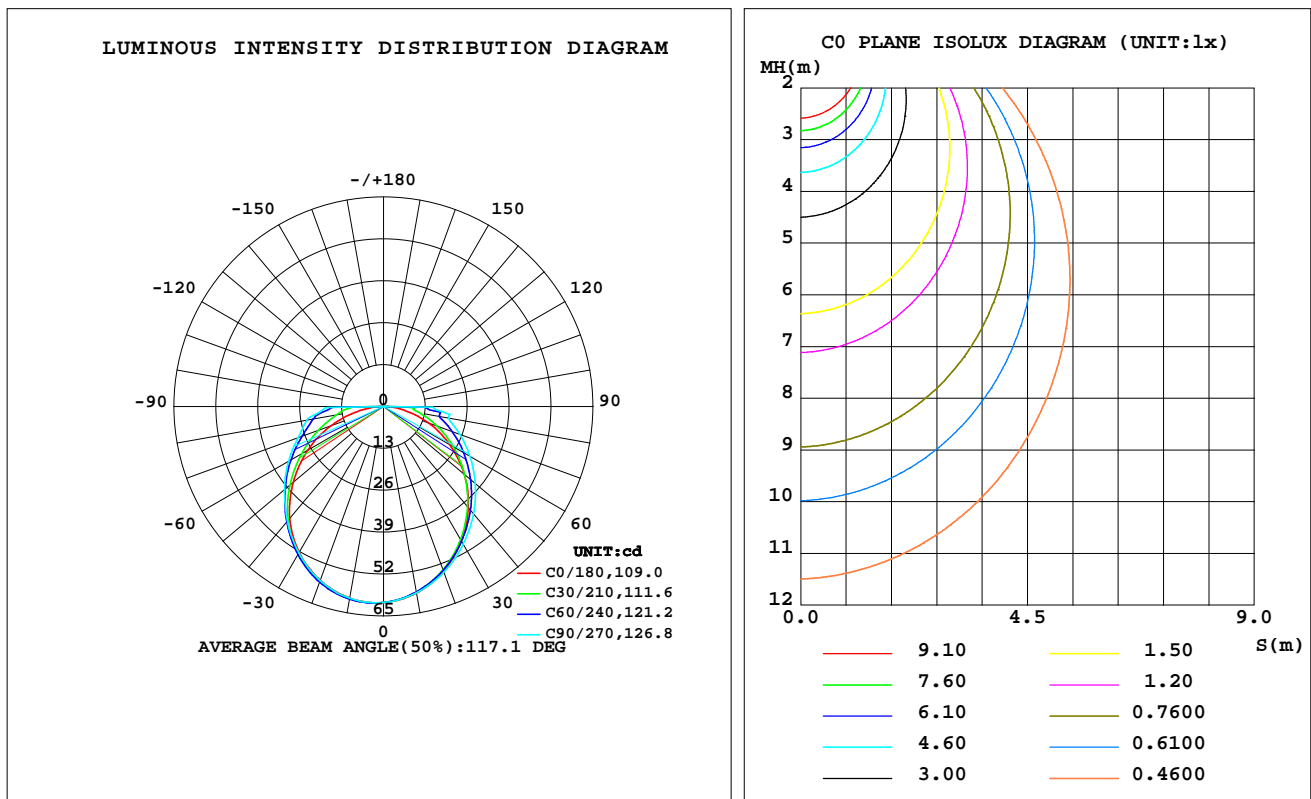
C Range: 0 - 360DEG
C Interval: 30.0DEG
Test Speed: HIGH
Temperature: 25.3 °C
Operators: zoe
Test Date: 2025-2-18

γ Range: 0 - 180DEG
 γ Interval: 1.0DEG
Test System: EVERFINE GO-SPEX500_V1 SYSTEM V2.00.461
Humidity: 65.0%
Test Distance: 3.160m [K=1.0000]
Remarks: LAMP: HL-A-3014H421W-S1-08HL-HR5 Ra: 90
PC: PT-0064A
NOT DRIVER: 48V
30minutes warm-up

LUMINAIRE PHOTOMETRIC TEST REPORT

Test:U:47.997V I:0.1038A P:4.9821W PF:1.0000 Freq:0Hz Lamp Flux:507.172x1 lm		
NAME: OZ48-P1-3	TYPE:	WEIGHT:
SPEC.: 3000K	DIM.:	SERIAL No.: 2502180096
MFR.: RISE	SUR.: 0.00174m2	Shielding Angle:

DATA OF LAMP		PHOTOMETRIC DATA Eff: 39.12 lm/W			
MODEL	HONGLI	Imax(cd)	61.09	S/MH(C0/180)	1.28
NOMINAL POWER(W)	5	LOR(%)	38.4	S/MH(C90/270)	1.28
RATED VOLTAGE(V)	48	TOTAL FLUX(lm)	194.91	η UP,DN(C0-180)	0.0,18.5
NOMINAL FLUX(lm)	507.172	CIE CLASS	DIRECT	η UP,DN(C180-360)	0.0,19.9
LAMPS INSIDE	1	η up(%)	0.0	CIBSE SHR NOM	1.25
TEST VOLTAGE(V)	48	η down(%)	38.4	CIBSE SHR MAX	1.35



C Range: 0 - 360DEG
C Interval: 30.0DEG
Test Speed: HIGH
Temperature:25.3℃
Operators:zoe
Test Date:2025-2-18

γ Range: 0 - 180DEG
 γ Interval: 1.0DEG
Test System:EVERFINE GO-SPEX500_V1 SYSTEM V2.00.461
Humidity:65.0%
Test Distance:3.160m [K=1.0000]
Remarks: LAMP:HL-A-3014H421W-S1-08HL-HR5 Ra:90
PC:PT-0064A
NOT DRIVER:48V
30minutes warm-up

ZONAL FLUX DIAGRAM

ZONAL FLUX DIAGRAM:

γ	C0	C45	C90	C135	C180	C225	C270	C315	γ	Φ zone	Φ total	%lum,lamp
10	58.79	58.47	58.72	59.46	60.34	60.66	60.42	59.68	0- 10	5.746	5.746	2.95,1.13
20	54.44	54.01	54.75	55.90	57.38	57.95	57.50	56.07	10- 20	16.37	22.12	11.3,4.36
30	48.28	48.07	49.40	50.58	52.34	53.00	52.53	50.48	20- 30	24.64	46.76	24,9.22
40	41.01	41.28	43.50	44.02	45.28	46.41	46.44	43.64	30- 40	29.64	76.40	39.2,15.1
50	32.72	34.06	37.18	36.61	36.61	38.88	40.15	36.17	40- 50	31.09	107.5	55.1,21.2
60	23.72	26.89	30.99	29.01	27.12	31.27	34.00	28.83	50- 60	29.31	136.8	70.2,27
70	14.78	20.15	25.19	21.74	17.13	24.18	28.21	21.92	60- 70	25.11	161.9	83.1,31.9
80	6.162	14.47	20.64	15.45	7.416	18.46	24.12	16.47	70- 80	19.60	181.5	93.1,35.8
90	0	0	0	0	0	0	0	0	80- 90	13.40	194.9	100,38.4
100	0	0	0	0	0	0	0	0	90-100	0	194.9	100,38.4
110	0	0	0	0	0	0	0	0	100-110	0	194.9	100,38.4
120	0	0	0	0	0	0	0	0	110-120	0	194.9	100,38.4
130	0	0	0	0	0	0	0	0	120-130	0	194.9	100,38.4
140	0	0	0	0	0	0	0	0	130-140	0	194.9	100,38.4
150	0	0	0	0	0	0	0	0	140-150	0	194.9	100,38.4
160	0	0	0	0	0	0	0	0	150-160	0	194.9	100,38.4
170	0	0	0	0	0	0	0	0	160-170	0	194.9	100,38.4
180	0	0	0	0	0	0	0	0	170-180	0	194.9	100,38.4
DEG	LUMINOUS INTENSITY:cd									UNIT:lm		

C Range: 0 - 360DEG
C Interval: 30.0DEG
Test Speed: HIGH
Temperature:25.3℃
Operators:zoe
Test Date:2025-2-18

γ Range: 0 - 180DEG
 γ Interval: 1.0DEG
Test System:EVERFINE GO-SPEX500_V1 SYSTEM V2.00.461
Humidity:65.0%
Test Distance:3.160m [K=1.0000]
Remarks: LAMP:HL-A-3014H421W-S1-08HL-HR5 Ra:90
PC:PT-0064A
NOT DRIVER:48V
30minutes warm-up

LUMINANCE LIMITATION CURVES

Test:U:47.997V I:0.1038A P:4.9821W PF:1.0000 Freq:0Hz
Lamp Flux:507.172x1 lm

NAME: OZ48-P1-3

TYPE:

WEIGHT:

SPEC.: 3000K

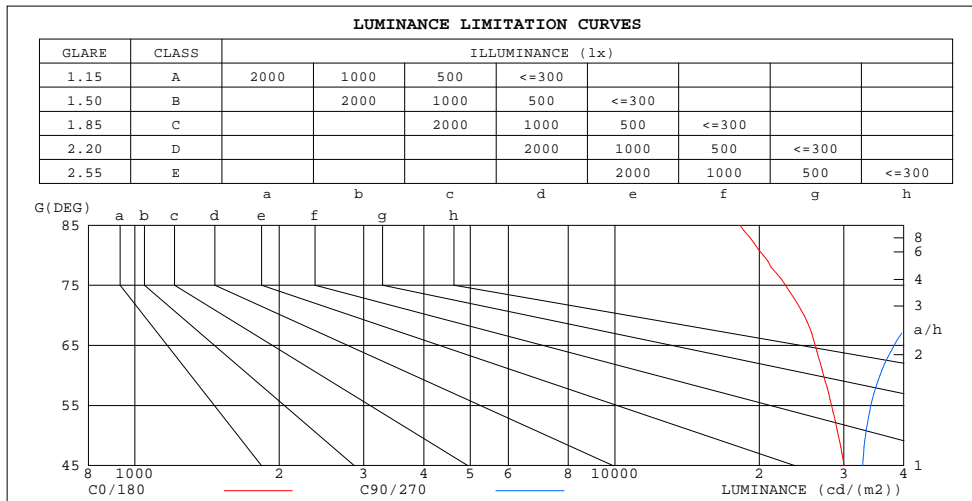
DIM.:

SERIAL No.: 2502180096

MFR.: RISE

SUR.: 0.00174m2

Shielding Angle:



LUMINANCE cd/(m2)		
G(180)	C0/180	C90/270
85	18239	119199
80	20375	68404
75	22680	49906
70	24805	42378
65	26157	38161
60	27240	35661
55	28287	34139
50	29224	33278
45	30031	32833

C Range: 0 - 360DEG
C Interval: 30.0DEG
Test Speed: HIGH
Temperature:25.3℃
Operators:zoe
Test Date:2025-2-18

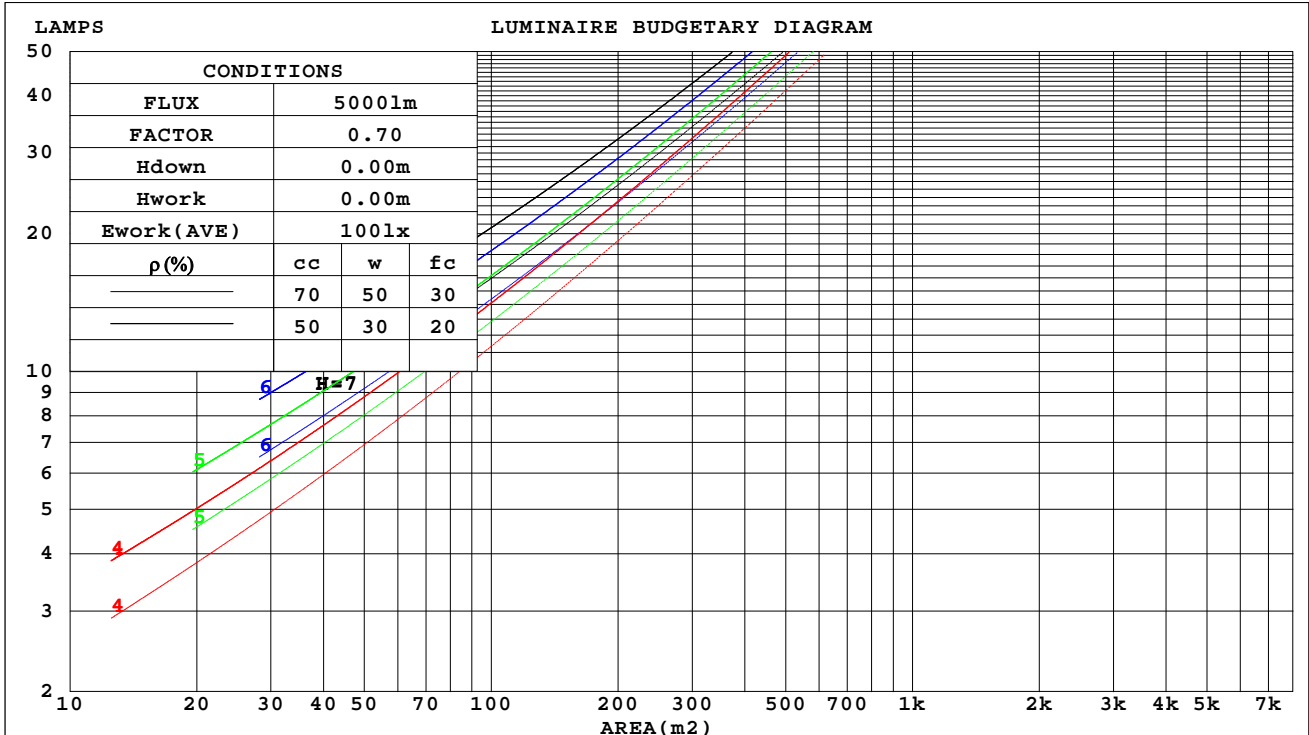
γ Range: 0 - 180DEG
γ Interval: 1.0DEG
Test System:EVERFINE GO-SPEX500_V1 SYSTEM V2.00.461
Humidity:65.0%
Test Distance:3.160m [K=1.0000]
Remarks: LAMP:HL-A-3014H421W-S1-08HL-HR5 Ra:90
PC:PT-0064A
NOT DRIVER:48V
30minutes warm-up

CU AND LUMINAIRE BUDGETARY ESTIMATE DIAGRAM

Test:U:47.997V I:0.1038A P:4.9821W PF:1.0000 Freq:0Hz
Lamp Flux:507.172x1 lm

NAME: OZ48-P1-3	TYPE:	WEIGHT:
SPEC.: 3000K	DIM.:	SERIAL No.: 2502180096
MFR.: RISE	SUR.: 0.00174m2	Shielding Angle:

ρ_{cc}	80%			70%			50%			30%			10%			0
ρ_w	50%	30%	10%	50%	30%	10%	50%	30%	10%	50%	30%	10%	50%	30%	10%	0
ρ_{fc}	20%			20%			20%			20%			20%			0
RCR	RCR:Room Cavity Ratio															



C Range: 0 - 360DEG
C Interval: 30.0DEG
Test Speed: HIGH
Temperature:25.3℃
Operators:zoe
Test Date:2025-2-18

γ Range: 0 - 180DEG
 γ Interval: 1.0DEG
Test System:EVERFINE GO-SPEX500_V1 SYSTEM V2.00.461
Humidity:65.0%
Test Distance:3.160m [K=1.0000]
Remarks: LAMP:HL-A-3014H421W-S1-08HL-HR5 Ra:90
PC:PT-0064A
NOT DRIVER:48V
30minutes warm-up

WEC AND CCEC

Test:U:47.997V I:0.1038A P:4.9821W PF:1.0000 Freq:0Hz Lamp Flux:507.172x1 lm		
NAME: OZ48-P1-3	TYPE:	WEIGHT:
SPEC.: 3000K	DIM.:	SERIAL No.: 2502180096
MFR.: RISE	SUR.: 0.00174m2	Shielding Angle:

pcc	80%			70%			50%			30%			10%			0
pw	50%	30%	10%	50%	30%	10%	50%	30%	10%	50%	30%	10%	50%	30%	10%	0
pfc	20%			20%			20%			20%			20%			0
RCR	RCR:Room Cavity Ratio						Wall Exitance Coefficients(WEC)									
0.0																
1.0	.145	.083	.026	.143	.081	.026	.137	.079	.025	.133	.076	.025	.128	.074	.024	
2.0	.128	.070	.021	.125	.069	.021	.121	.067	.021	.116	.065	.020	.112	.064	.020	
3.0	.114	.061	.018	.112	.060	.018	.108	.058	.018	.104	.057	.017	.101	.056	.017	
4.0	.103	.054	.016	.101	.053	.016	.098	.052	.015	.094	.051	.015	.091	.050	.015	
5.0	.094	.048	.014	.092	.047	.014	.089	.046	.014	.086	.045	.014	.083	.045	.013	
6.0	.086	.043	.012	.085	.043	.012	.082	.042	.012	.079	.041	.012	.077	.040	.012	
7.0	.080	.039	.011	.078	.039	.011	.076	.038	.011	.073	.038	.011	.071	.037	.011	
8.0	.074	.036	.010	.073	.036	.010	.071	.035	.010	.068	.035	.010	.066	.034	.010	
9.0	.069	.033	.009	.068	.033	.009	.066	.033	.009	.064	.032	.009	.062	.032	.009	
10.0	.065	.031	.009	.064	.031	.009	.062	.030	.009	.060	.030	.008	.059	.029	.008	

pcc	80%			70%			50%			30%			10%			0	
pw	50%	30%	10%	50%	30%	10%	50%	30%	10%	50%	30%	10%	50%	30%	10%	0	
pfc	20%			20%			20%			20%			20%			0	
RCR	RCR:Room Cavity Ratio						Ceiling Cavity Exitance Coefficients(CCEC)										
0.0	.073	.073	.073	.063	.063	.063	.043	.043	.043	.025	.025	.025	.008	.008	.008		
1.0	.071	.060	.050	.061	.051	.043	.042	.035	.029	.024	.020	.017	.008	.007	.006		
2.0	.068	.051	.036	.058	.044	.031	.040	.030	.022	.023	.018	.013	.007	.006	.004		
3.0	.065	.044	.027	.056	.038	.023	.038	.026	.016	.022	.015	.010	.007	.005	.003		
4.0	.062	.039	.021	.053	.034	.019	.037	.023	.013	.021	.014	.008	.007	.004	.003		
5.0	.059	.035	.017	.051	.030	.015	.035	.021	.011	.020	.012	.006	.007	.004	.002		
6.0	.056	.032	.014	.048	.028	.013	.033	.019	.009	.019	.011	.005	.006	.004	.002		
7.0	.053	.029	.012	.046	.025	.011	.032	.018	.008	.018	.010	.005	.006	.003	.001		
8.0	.051	.027	.011	.044	.023	.009	.030	.016	.007	.018	.010	.004	.006	.003	.001		
9.0	.048	.025	.009	.042	.022	.008	.029	.015	.006	.017	.009	.003	.005	.003	.001		
10.0	.046	.023	.008	.040	.020	.007	.027	.014	.005	.016	.008	.003	.005	.003	.001		

C Range: 0 - 360DEG
C Interval: 30.0DEG
Test Speed: HIGH
Temperature:25.3℃
Operators:zoe
Test Date:2025-2-18

γ Range: 0 - 180DEG
γ Interval: 1.0DEG
Test System:EVERFINE GO-SPEX500_V1 SYSTEM V2.00.461
Humidity:65.0%
Test Distance:3.160m [K=1.0000]
Remarks: LAMP:HL-A-3014H421W-S1-08HL-HR5 Ra:90
PC:PT-0064A
NOT DRIVER:48V
30minutes warm-up

UGR(Unified Glare Rating) Table

Test:U:47.997V I:0.1038A P:4.9821W PF:1.0000 Freq:0Hz Lamp Flux:507.172x1 lm										
NAME: OZ48-P1-3					TYPE:			WEIGHT:		
SPEC.: 3000K					DIM.:			SERIAL No.: 2502180096		
MFR.: RISE					SUR.: 0.00174m2			Shielding Angle:		
ceiling/cavity	0.7	0.7	0.5	0.5	0.3	0.7	0.7	0.5	0.5	0.3
walls	0.5	0.3	0.5	0.3	0.3	0.5	0.3	0.5	0.3	0.3
working plane	0.2	0.2	0.2	0.2	0.2	0.2	0.2	0.2	0.2	0.2
Room dimensions	Viewed crosswise					Viewed endwise				
x = 2H y = 2H	26.2	27.8	26.5	28.0	28.3	27.3	28.9	27.5	29.1	29.3
3H	27.8	29.3	28.1	29.5	29.8	29.6	31.1	29.9	31.4	31.6
4H	28.4	29.9	28.8	30.1	30.4	30.9	32.3	31.2	32.6	32.9
6H	28.9	30.3	29.3	30.6	30.9	32.3	33.7	32.7	34.0	34.3
8H	29.1	30.4	29.4	30.7	31.0	33.3	34.6	33.6	34.9	35.2
12H	29.2	30.5	29.6	30.8	31.1	34.3	35.6	34.6	35.9	36.2
4H 2H	27.1	28.5	27.4	28.8	29.0	27.9	29.3	28.2	29.6	29.8
3H	28.9	30.2	29.2	30.5	30.8	30.5	31.7	30.8	32.0	32.4
4H	29.7	30.9	30.1	31.2	31.6	31.9	33.1	32.3	33.4	33.8
6H	30.4	31.5	30.8	31.8	32.2	33.6	34.7	34.0	35.0	35.4
8H	30.7	31.7	31.1	32.0	32.4	34.7	35.7	35.1	36.1	36.4
12H	30.9	31.8	31.3	32.2	32.6	35.8	36.8	36.3	37.1	37.6
8H 4H	30.5	31.5	30.9	31.8	32.2	32.3	33.3	32.7	33.7	34.1
6H	31.5	32.3	31.9	32.7	33.1	34.3	35.1	34.7	35.5	36.0
8H	31.9	32.7	32.4	33.1	33.5	35.6	36.4	36.1	36.8	37.3
12H	32.3	33.0	32.8	33.4	33.9	37.0	37.7	37.5	38.1	38.6
12H 4H	30.7	31.6	31.1	32.0	32.4	32.3	33.3	32.8	33.7	34.1
6H	31.9	32.6	32.3	33.1	33.5	34.4	35.2	34.9	35.6	36.1
8H	32.5	33.1	33.0	33.6	34.1	35.9	36.6	36.4	37.0	37.5
Variations with the observer position at spacings(CIE Pub.117):										
S = 1.0H	+ 0.1 / - 0.2					+ 0.1 / - 0.1				
1.5H	+ 0.2 / - 0.3					+ 0.3 / - 0.3				
2.0H	+ 0.1 / - 0.3					+ 0.2 / - 0.4				

CIE Pub.117, 507.2 lm Total Lamp Luminous Flux Correct (8log(F/F0) = -2.4)
Area: 0.00174 m2

C Range: 0 - 360DEG
C Interval: 30.0DEG
Test Speed: HIGH
Temperature:25.3℃
Operators:zoe
Test Date:2025-2-18

γ Range: 0 - 180DEG
γ Interval: 1.0DEG
Test System:EVERFINE GO-SPEX500_V1 SYSTEM V2.00.461
Humidity:65.0%
Test Distance:3.160m [K=1.0000]
Remarks: LAMP:HL-A-3014H421W-S1-08HL-HR5 Ra:90
PC:PT-0064A
NOT DRIVER:48V
30minutes warm-up

UTILIZATION FACTORS TABLE

Test:U:47.997V I:0.1038A P:4.9821W PF:1.0000 Freq:0Hz Lamp Flux:507.172x1 lm		
NAME: OZ48-P1-3	TYPE:	WEIGHT:
SPEC.: 3000K	DIM.:	SERIAL No.: 2502180096
MFR.: RISE	SUR.: 0.00174m2	Shielding Angle:

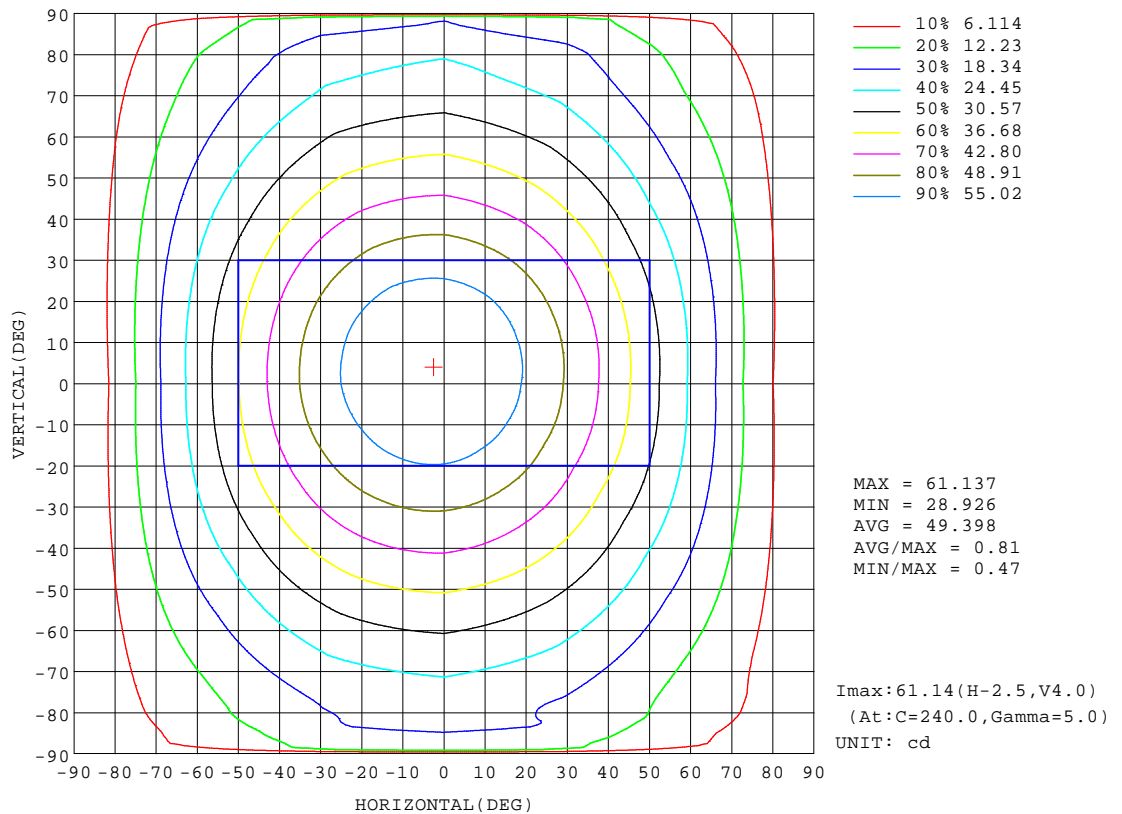
REFLECTANCE										
Ceiling	0.8	0.8	0.8	0.7	0.7	0.7	0.5	0.5	0.5	0
Walls	0.7	0.5	0.3	0.7	0.5	0.3	0.7	0.5	0.3	0
Working plane	0.2	0.2	0.2	0.2	0.2	0.2	0.2	0.2	0.2	0
ROOM INDEX	UTILIZATION FACTORS(PERCENT) $k(RI) \times RCR = 5$									
k = 0.60	21	16	14	21	16	14	20	16	13	11
0.80	25	20	17	24	20	17	24	19	17	14
1.00	28	23	20	27	23	20	26	24	20	17
1.25	30	26	23	30	26	23	29	25	23	19
1.50	32	28	25	32	28	25	30	27	25	21
2.00	35	31	28	34	31	28	33	30	28	24
2.50	37	33	31	36	33	30	34	32	29	26
3.00	38	35	32	37	34	32	35	33	31	28
4.00	40	37	35	39	36	34	37	35	33	30
5.00	41	38	37	40	38	36	38	36	35	31
ROOM INDEX	UF(total)									Direct
According to DIN EN 13032-2 2004			Suspended					SHRNOM = 1.25		

C Range: 0 - 360DEG
C Interval: 30.0DEG
Test Speed: HIGH
Temperature:25.3℃
Operators:zoe
Test Date:2025-2-18

γ Range: 0 - 180DEG
γ Interval: 1.0DEG
Test System:EVERFINE GO-SPEX500_V1 SYSTEM V2.00.461
Humidity:65.0%
Test Distance:3.160m [K=1.0000]
Remarks: LAMP:HL-A-3014H421W-S1-08HL-HR5 Ra:90
PC:PT-0064A
NOT DRIVER:48V
30minutes warm-up

ISOCANDELA DIAGRAM

Test:U:47.997V I:0.1038A P:4.9821W PF:1.0000 Freq:0Hz Lamp Flux:507.172x1 lm		
NAME: OZ48-P1-3	TYPE:	WEIGHT:
SPEC.: 3000K	DIM.:	SERIAL No.: 2502180096
MFR.: RISE	SUR.: 0.00174m2	Shielding Angle:

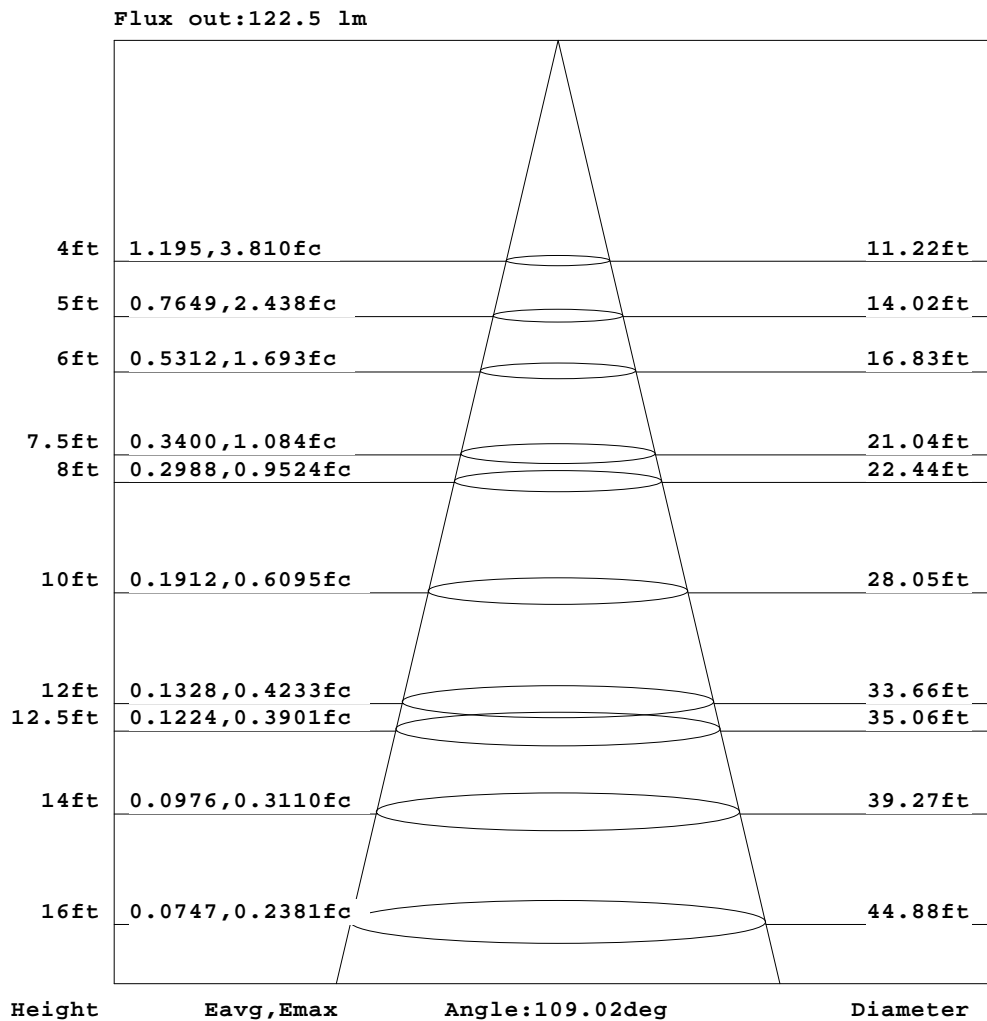


C Range: 0 - 360DEG
C Interval: 30.0DEG
Test Speed: HIGH
Temperature: 25.3°C
Operators: zoe
Test Date: 2025-2-18

γ Range: 0 - 180DEG
γ Interval: 1.0DEG
Test System: EVERFINE GO-SPEX500_V1 SYSTEM V2.00.461
Humidity: 65.0%
Test Distance: 3.160m [K=1.0000]
Remarks: LAMP: HL-A-3014H421W-S1-08HL-HR5 Ra: 90
PC: PT-0064A
NOT DRIVER: 48V
30minutes warm-up

AAI Figure

Test:U:47.997V I:0.1038A P:4.9821W PF:1.0000 Freq:0Hz Lamp Flux:507.172x1 lm		
NAME: OZ48-P1-3	TYPE:	WEIGHT:
SPEC.: 3000K	DIM.:	SERIAL No.: 2502180096
MFR.: RISE	SUR.: 0.00174m2	Shielding Angle:



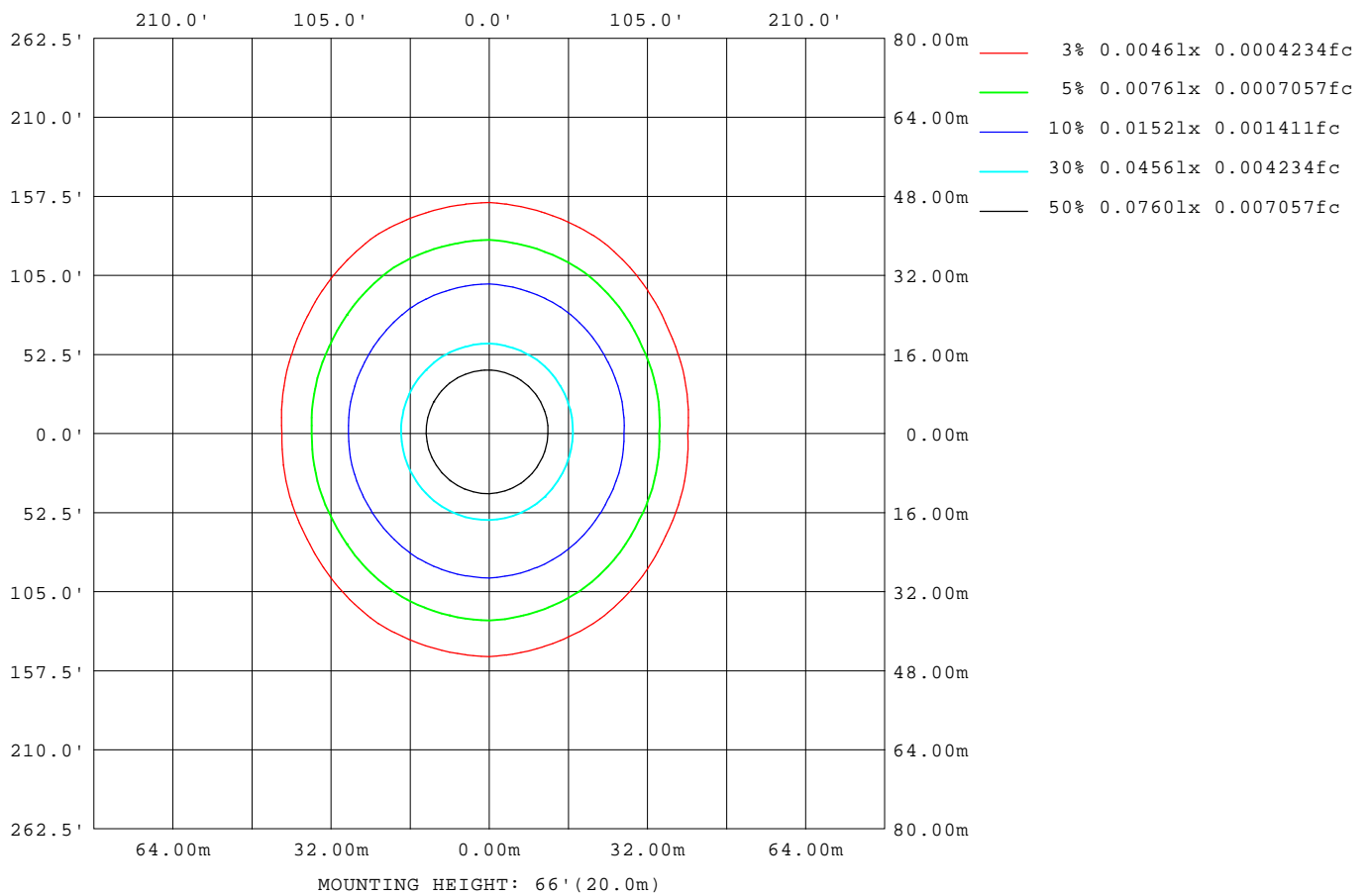
Note:The Curves indicate the illuminated area and the average illumination when the luminaire is at different distance.

C Range: 0 - 360DEG
C Interval: 30.0DEG
Test Speed: HIGH
Temperature:25.3℃
Operators:zoe
Test Date:2025-2-18

γ Range: 0 - 180DEG
γ Interval: 1.0DEG
Test System:EVERFINE GO-SPEX500_V1 SYSTEM V2.00.461
Humidity:65.0%
Test Distance:3.160m [K=1.0000]
Remarks: LAMP:HL-A-3014H421W-S1-08HL-HR5 Ra:90
PC:PT-0064A
NOT DRIVER:48V
30minutes warm-up

ISOLUX DIAGRAM

Test:U:47.997V I:0.1038A P:4.9821W PF:1.0000 Freq:0Hz Lamp Flux:507.172x1 lm		
NAME: OZ48-P1-3	TYPE:	WEIGHT:
SPEC.: 3000K	DIM.:	SERIAL No.: 2502180096
MFR.: RISE	SUR.: 0.00174m2	Shielding Angle:



C Range: 0 - 360DEG
C Interval: 30.0DEG
Test Speed: HIGH
Temperature:25.3℃
Operators:zoe
Test Date:2025-2-18

γ Range: 0 - 180DEG
γ Interval: 1.0DEG
Test System:EVERFINE GO-SPEX500_V1 SYSTEM V2.00.461
Humidity:65.0%
Test Distance:3.160m [K=1.0000]
Remarks: LAMP:HL-A-3014H421W-S1-08HL-HR5 Ra:90
PC:PT-0064A
NOT DRIVER:48V
30minutes warm-up

LED Avg.L Report

Test:U:47.997V I:0.1038A P:4.9821W PF:1.0000 Freq:0Hz Lamp Flux:507.172x1 lm		
NAME: OZ48-P1-3	TYPE:	WEIGHT:
SPEC.: 3000K	DIM.:	SERIAL No.: 2502180096
MFR.: RISE	SUR.: 0.00174m2	Shielding Angle:

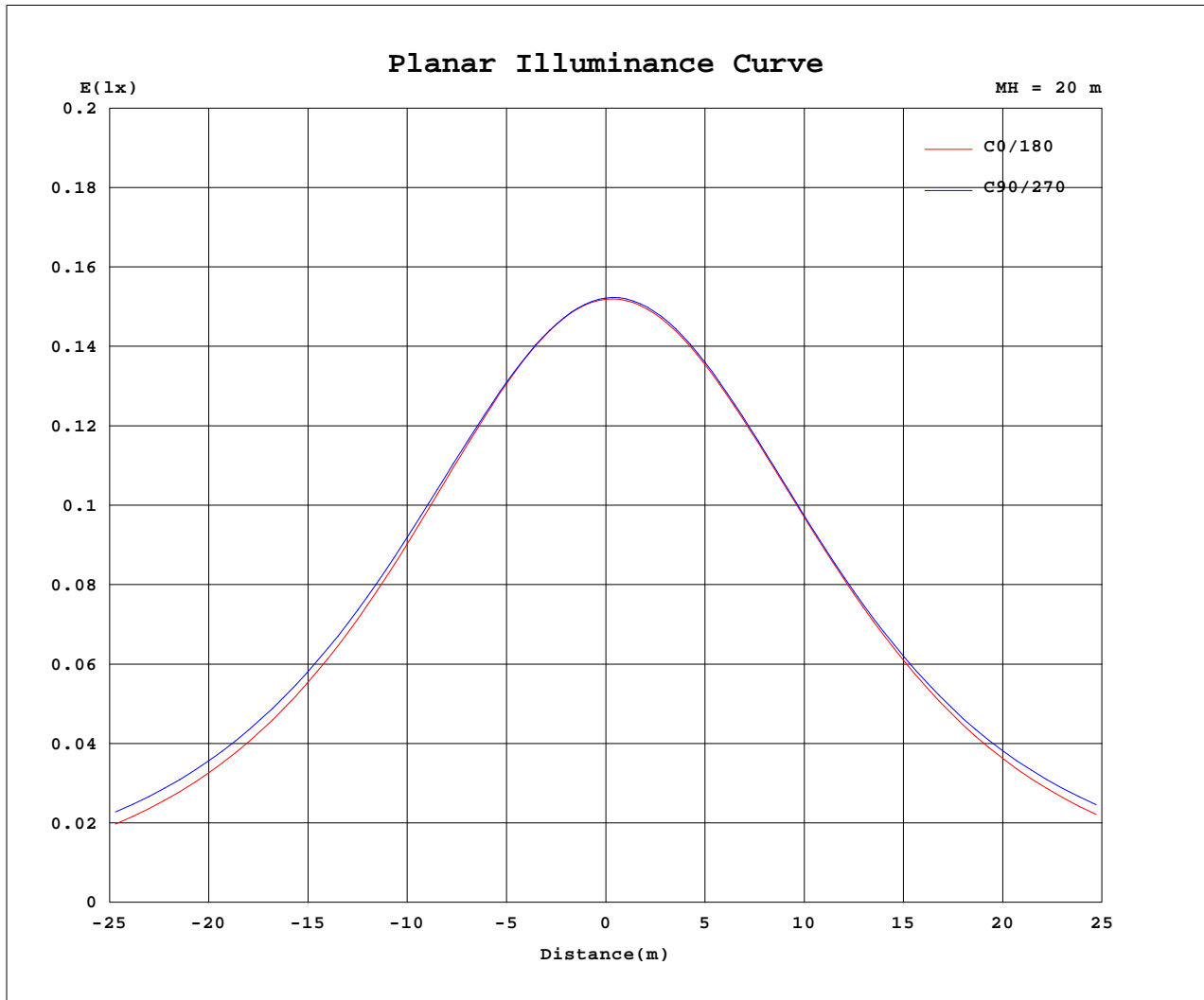
AvgL	cd/m2
L_0~180(65)av	28272
L_0~180(75)av	24868
L_0~180(85)av	20340
L_90~270(65)av	40142
L_90~270(75)av	53766
L_90~270(85)av	125189
L_45(65)av	34582
L_45(75)av	42203
L_45(85)av	92213

Standard: GB/T 29293-2012

C Range: 0 - 360DEG
C Interval: 30.0DEG
Test Speed: HIGH
Temperature:25.3℃
Operators:zoe
Test Date:2025-2-18

γ Range: 0 - 180DEG
γ Interval: 1.0DEG
Test System:EVERFINE GO-SPEX500_V1 SYSTEM V2.00.461
Humidity:65.0%
Test Distance:3.160m [K=1.0000]
Remarks: LAMP:HL-A-3014H421W-S1-08HL-HR5 Ra:90
PC:PT-0064A
NOT DRIVER:48V
30minutes warm-up

Planar Illuminance Curve



C Range: 0 - 360DEG
 C Interval: 30.0DEG
 Test Speed: HIGH
 Temperature: 25.3 °C
 Operators: zoe
 Test Date: 2025-2-18

γ Range: 0 - 180DEG
 γ Interval: 1.0DEG
 Test System: EVERFINE GO-SPEX500_V1 SYSTEM V2.00.461
 Humidity: 65.0%
 Test Distance: 3.160m [K=1.0000]
 Remarks: LAMP: HL-A-3014H421W-S1-08HL-HR5 Ra:90
 PC: PT-0064A
 NOT DRIVER: 48V
 30minutes warm-up



LUMINOUS DISTRIBUTION INTENSITY DATA

Test:U:47.997V I:0.1038A P:4.9821W PF:1.0000 Freq:0Hz Lamp Flux:507.172x1 lm		
NAME: OZ48-P1-3	TYPE:	WEIGHT:
SPEC.: 3000K	DIM.:	SERIAL No.: 2502180096
MFR.: RISE	SUR.: 0.00174m2	Shielding Angle:

Table--1

UNIT: cd

C(DEG) γ (DEG)	0	30	60	90	120	150	180	210	240	270	300	330						
0	60.8	60.8	60.8	60.8	60.8	60.8	60.8	60.8	60.8	60.8	60.8	60.8						
5	60.1	60.0	59.9	60.1	60.3	60.6	60.9	61.1	61.1	60.9	60.7	60.4						
10	58.8	58.5	58.5	58.7	59.2	59.8	60.3	60.6	60.7	60.4	60.0	59.4						
15	56.9	56.4	56.5	56.9	57.5	58.3	59.1	59.6	59.7	59.3	58.6	57.7						
20	54.4	53.9	54.1	54.7	55.4	56.4	57.4	57.9	58.0	57.5	56.7	55.5						
25	51.5	51.0	51.4	52.2	52.9	53.9	55.1	55.7	55.8	55.2	54.2	52.8						
30	48.3	47.8	48.4	49.4	50.1	51.1	52.3	52.9	53.1	52.5	51.3	49.7						
35	44.8	44.3	45.2	46.5	47.0	47.8	49.1	49.7	50.0	49.6	48.1	46.2						
40	41.0	40.6	42.0	43.5	43.8	44.2	45.3	46.1	46.7	46.4	44.8	42.5						
45	37.0	36.7	38.7	40.3	40.5	40.3	41.1	42.1	43.3	43.2	41.3	38.6						
50	32.7	32.8	35.3	37.2	37.1	36.1	36.6	37.9	39.8	40.2	37.8	34.6						
55	28.3	28.9	32.0	34.0	33.6	31.9	31.9	33.6	36.5	37.1	34.5	30.5						
60	23.7	25.1	28.7	31.0	30.3	27.7	27.1	29.3	33.2	34.0	31.3	26.4						
65	19.3	21.3	25.6	28.0	27.0	23.6	22.3	25.3	30.0	31.0	28.1	22.4						
70	14.8	17.6	22.7	25.2	23.9	19.6	17.1	21.4	26.9	28.2	25.1	18.8						
75	10.2	14.3	19.9	22.4	21.0	15.8	12.2	17.8	24.3	26.0	22.5	15.3						
80	6.16	11.3	17.6	20.6	18.4	12.5	7.42	14.8	22.2	24.1	20.6	12.3						
85	2.77	9.39	15.6	18.1	16.4	9.89	3.40	12.2	18.6	19.9	17.0	10.2						
90	0.00	0.00	0.00	0.00	0.00	0.00	0.00	0.00	0.00	0.00	0.00	0.00						
95	0.00	0.00	0.00	0.00	0.00	0.00	0.00	0.00	0.00	0.00	0.00	0.00						
100	0.00	0.00	0.00	0.00	0.00	0.00	0.00	0.00	0.00	0.00	0.00	0.00						
105	0.00	0.00	0.00	0.00	0.00	0.00	0.00	0.00	0.00	0.00	0.00	0.00						
110	0.00	0.00	0.00	0.00	0.00	0.00	0.00	0.00	0.00	0.00	0.00	0.00						
115	0.00	0.00	0.00	0.00	0.00	0.00	0.00	0.00	0.00	0.00	0.00	0.00						
120	0.00	0.00	0.00	0.00	0.00	0.00	0.00	0.00	0.00	0.00	0.00	0.00						
125	0.00	0.00	0.00	0.00	0.00	0.00	0.00	0.00	0.00	0.00	0.00	0.00						
130	0.00	0.00	0.00	0.00	0.00	0.00	0.00	0.00	0.00	0.00	0.00	0.00						
135	0.00	0.00	0.00	0.00	0.00	0.00	0.00	0.00	0.00	0.00	0.00	0.00						
140	0.00	0.00	0.00	0.00	0.00	0.00	0.00	0.00	0.00	0.00	0.00	0.00						
145	0.00	0.00	0.00	0.00	0.00	0.00	0.00	0.00	0.00	0.00	0.00	0.00						
150	0.00	0.00	0.00	0.00	0.00	0.00	0.00	0.00	0.00	0.00	0.00	0.00						
155	0.00	0.00	0.00	0.00	0.00	0.00	0.00	0.00	0.00	0.00	0.00	0.00						
160	0.00	0.00	0.00	0.00	0.00	0.00	0.00	0.00	0.00	0.00	0.00	0.00						
165	0.00	0.00	0.00	0.00	0.00	0.00	0.00	0.00	0.00	0.00	0.00	0.00						
170	0.00	0.00	0.00	0.00	0.00	0.00	0.00	0.00	0.00	0.00	0.00	0.00						
175	0.00	0.00	0.00	0.00	0.00	0.00	0.00	0.00	0.00	0.00	0.00	0.00						
180	0.00	0.00	0.00	0.00	0.00	0.00	0.00	0.00	0.00	0.00	0.00	0.00						

C Range: 0 - 360DEG
C Interval: 30.0DEG
Test Speed: HIGH
Temperature:25.3℃
Operators:zoe
Test Date:2025-2-18

γ Range: 0 - 180DEG
γ Interval: 1.0DEG
Test System:EVERFINE GO-SPEX500_V1 SYSTEM V2.00.461
Humidity:65.0%
Test Distance:3.160m [K=1.0000]
Remarks: LAMP:HL-A-3014H421W-S1-08HL-HR5 Ra:90
PC:PT-0064A
NOT DRIVER:48V
30minutes warm-up